

DIVISION 10

SECTION 101200

DISPLAY CASES

A-1
VISUAL
SYSTEMS

SECTION 101200
DISPLAY CASES

A-1
VISUAL
SYSTEMS

PART 1 – GENERAL

1.1 SUMMARY

- A. Section Includes:
 - 1. Illuminated display cases.

1.2 DEFINITIONS

- A. Display Case: Glazed cabinet with visual display surface background and adjustable shelves.

1.3 ACTION SUBMITTALS

- A. Product Data: For each type of product indicated.
- B. Shop Drawings: For display cases. Include plans, elevations, sections, details, and attachments to other work.
 - 1. Show location of seams and joints in visual display surfaces.
 - 2. Include sections of typical trim members.
 - 3. Wiring Diagrams: For power, signal, and control wiring.
- C. Samples: For each exposed product and for each color and texture specified.

1.4 CLOSEOUT SUBMITTALS

- A. Maintenance Data: For visual display surfaces, operating hardware, and illuminated units to include in maintenance manuals.

1.5 QUALITY ASSURANCE

- A. Surface-Burning Characteristics: As determined by testing identical products according to ASTM E 84 by a qualified testing agency. Identify products with appropriate markings of applicable testing agency.
 - 1. Flame-Spread Index: 25 or less.
 - 2. Smoke-Developed Index: 450 or less.
- B. Electrical Components, Devices, and Accessories: Listed and labeled as defined in NFPA 70, by a qualified testing agency, and marked for intended location and application.

2.1 MATERIALS

SECTION 101200
DISPLAY CASES

- A. Hardwood Plywood: HPVA HP-1, made with adhesive containing no urea formaldehyde.
- B. Plastic-Impregnated Cork Sheet: Seamless, homogeneous, self-sealing sheet consisting of granulated cork, linseed oil, resin binders, and dry pigments that are mixed and calendared onto burlap backing; with washable vinyl finish and integral color throughout.
- C. Extruded-Aluminum Bars and Shapes: ASTM B 221, Alloy 6063.
- D. Aluminum Tubing: ASTM B 429, Alloy 6063.

DISPLAY CASES

101200 - 1

- E. Clear Tempered Glass: ASTM C 1048, Kind FT, Condition A, Type I, Class 1, Quality Q3, with exposed edges seamed before tempering, and 6 mm thick unless otherwise indicated.
- F. High-Pressure Plastic Laminate: NEMA LD 3.
- G. Fasteners: Provide screws, bolts, and other fastening devices made from same material as items being fastened. Provide types, sizes, and lengths to suit installation conditions. Use security fasteners where exposed to view.
- H. Adhesives: Manufacturer's standard product that complies with the testing and product requirements of the California Department of Health Services' "Standard Practice for the Testing of Volatile Organic Emissions from Various Sources Using Small-Scale Environmental Chambers."

2.2 DISPLAY CASE

- A. Basis-of-Design Product: Recessed Trophy and Display Cases. As manufactured by A-1 VISUAL SYSTEMS, 16221 S. Maple Avenue, Gardena, CA 90248
800/423-3386

<mailto:sales@a-1visualsystems.com>

- 1. Size: As indicated on Drawings.
- 2. Depth: As indicated on Drawings.

SECTION 101200
DISPLAY CASES

- B. Recessed Cabinet: Factory-fabricated cabinet; with tackboard assembly on back inside surface, operable glazed doors at front, and trim on face to cover edge of recessed opening.
 - 1. Cabinet Box: Plastic-laminate-clad plywood. Color and pattern selected by Architect from manufacturer's full range.
 - 2. Cabinet Frame and Trim: Aluminum, 3 inches wide.
 - 3. Aluminum Finish: Clear anodic.
- C. Glazed Hinged Door(s): Tempered glass; framed; with extruded-aluminum, cam-lock with two keys.
 - 1. Thickness: Not less than 6 mm thick.
 - 2. Number of Doors: One or more as required.
- D. Shelves: 8-mm-thick tempered glass; supported on adjustable shelf standards and supports.
 - 1. Shelf Width: Per detail drawing.
 - 2. Number of Shelves: Per detail drawing.
- E. Adjustable Shelf Standards and Supports: Recess mounted in rear surface.
- F. Tack Surface: Natural textured cork tackboard assembly.
 - 1. Vinyl-Covered Tackboards: Colors selected by Architect from manufacturer's standard colors.
- G. Illumination System: Concealed top-lighting system consisting of LED fixtures. Include lamps and internal wiring with single concealed electrical connection to building system. Coordinate electrical characteristics with power supply provided.

DISPLAY CASES

- A. Fabricate display cases to requirements indicated for dimensions, design, and thickness and finish of materials.
- B. Use metals and shapes of thickness and reinforcing to produce flat surfaces, free of oil-canning, and to impart strength for size, design, and application indicated.

SECTION 101200
DISPLAY CASES

2.3 FABRICATION

- C. Fabricate cabinets and door frames with reinforced corners, mitered to a hairline fit.
- D. Fabricate shelf standards plumb and at heights to align shelf brackets for level shelves.

2.4 ALUMINUM FINISHES

- A. Clear Anodic Finish: AAMA 611, AA-M12C22A31, Class II, 0.010 mm or thicker.

PART 3 - EXECUTION

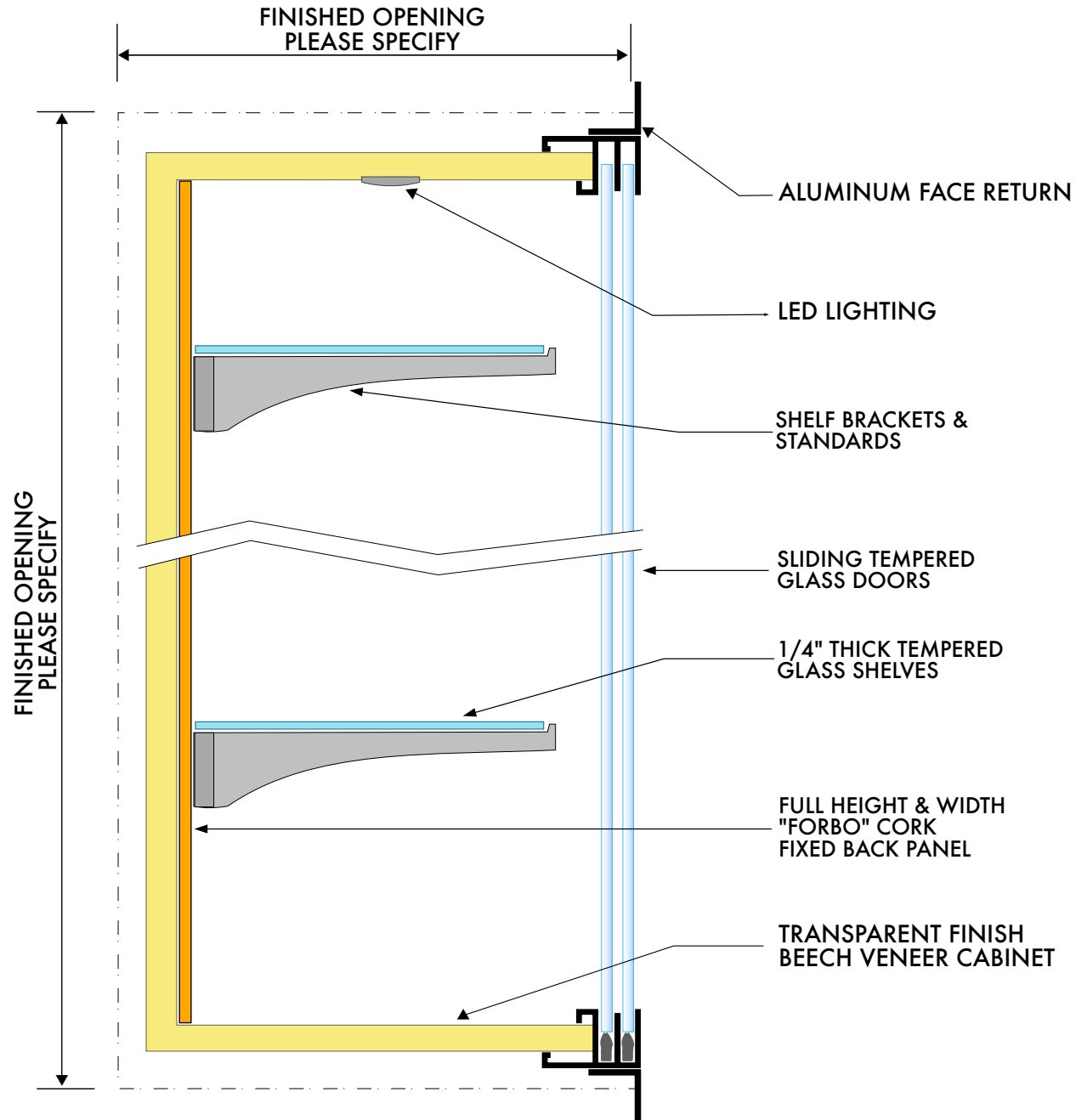
3.1 INSTALLATION

- A. General: Install units in locations and at mounting heights indicated on Drawings. Reassemble display knocked-down display case at Project site according to manufacturer's instructions.
- B. Keep perimeter lines straight, level, and plumb. Provide grounds, clips, backing materials, adhesives, brackets, anchors, trim, and accessories necessary for complete installation.
- C. Recessed Display Cases: Attach units to wall framing with fasteners at not more than 16 inches o.c. Attach aluminum trim over edges of recessed display cases and conceal grounds and clips. Attach trim with fasteners at not more than 24 inches o.c.
- D. Comply with requirements specified elsewhere for connecting illuminated display cases. After installation is complete, install new fluorescent lamps.
- E. Install display case shelving level and straight.
- F. Adjust doors to operate smoothly without warp or bind and so contact points meet accurately. Lubricate operating hardware as recommended by manufacturer.

END OF SECTION 101200

SECTION 101200
DISPLAY CASES

A-1
VISUAL
SYSTEMS



BURLAP WEAVE VINYL DISPLAY CASES

Normal cleaning should be done with mild ingredients such as soap detergent and water. If sustained and stronger cleaning is required, liquid household cleaners such as Lestoil should be used. The method of cleaning should be to rub briskly with a cloth or sponge and the detergent solution. If the pattern has a rough texture, a soft bristle brush should be used. Rinse with clean water and dry with absorbent cloth. Repeated use of stronger cleaners will extract plasticizer from vinyl causing it to lose its suppleness. Stains should be removed as quickly as possible as time is especially important for removing material containing colors or solvents such as ball point ink, nail polish, lipstick, paint...

<https://www.a-1visualsystems.com/copy-of-standard-fabric>

VINYL FABRICS

Vinyl wall-coverings are treated with an antimicrobial to resist the growth of mildew and bacteria. 100% water-based inks/Cadmium Free.

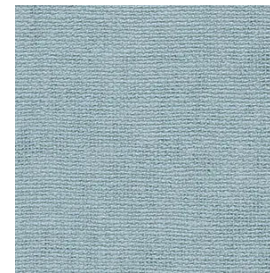
Other colors and patterns are available.



**Feather Dawn
V-01**



**Silver Fox
V-02**



**Breakwater
V-03**



**Antique White
V-04**



**Golden Tan
V-05**



**Sea Mist
V-06**



**Surf
V-07**



**Sandharbor
V-08**

FORBO Colored Cork
DISPLAY CASES

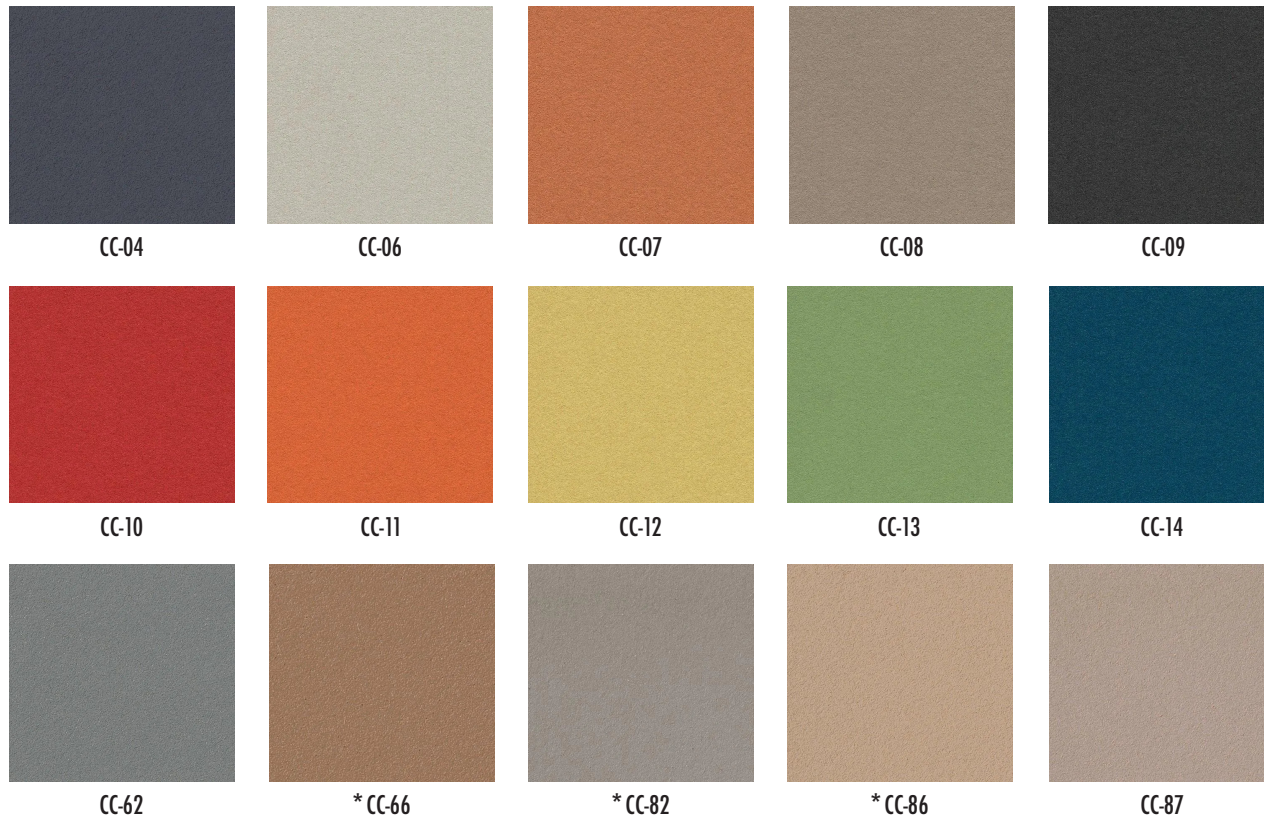
FORBO Colored Cork

Linoleum resilient homogeneous tackable surface is of natural materials consisting of linseed oil, granulated binders and dry pigments, mixed and calendered onto a natural jute backing.

Uni-Color extends throughout thickness of material.

*CC-66, CC82 and CC-86 are also available in 72" wide rolls.

<https://www.a-1visualsystems.com/copy-of-combination-boards-2>



PRODUCT WARRANTY DISPLAY CASES

A-I Visual Systems' products are warranted to the original purchaser for a period of one year from the due date of purchase against defects in the material or workmanship as to the board/cabinet components. The word "defect," as used in this warranty, is defined as imperfection which impairs the utility of this product.

This warranty is expressly limited to the replacement of board/cabinet components having defects. If the board/cabinet is defective within the terms of the warranty A-I Visual Systems will furnish a replacement board/cabinet component at no cost. No assembly labor is included.

All A-I Visual Systems' Porcelain-On-Steel writing surfaces are guaranteed not to wear for the life of the building in which it was originally installed.

This warranty applies under conditions of normal use, but does not apply to defects that result from intentional damage, negligence and unreasonable use or exposure.

All implied warranties arising under state law are limited in duration to the one year period of those warranty. Some states do not allow limitations on how long an implied warrant last, so the above limitations may not apply to you.

Liability for incidental or consequential damages excluded to the extent exclusions is permitted by law. Some states do not allow the exclusions or limitations of incidental or consequential damages, so the above limitation or exclusions may not apply to you.